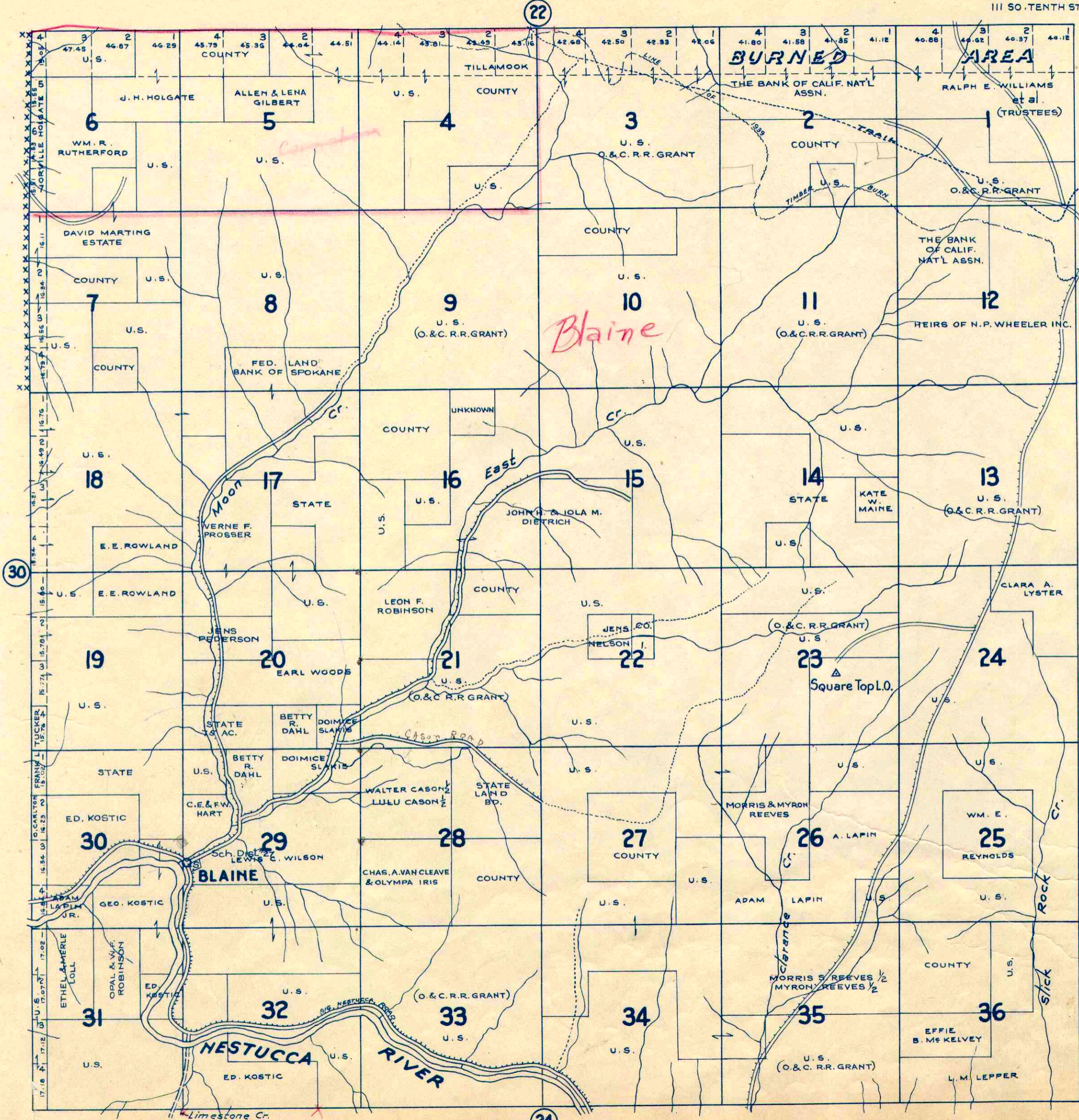


TOWNSHIP 3 S., RANGE 8 W.W.M. TILLAMOOK COUNTY ORE.

SCALE 2 IN. = 1 MILE.

CHAS. F. METSKER CIVIL ENGINEER
514 S.W. OAK STREET, PORTLAND, ORE.
111 50-TENTH STREET, TACOMA, WASH.

-SEC 22-
1-OTTO NELSON & A.H. CARLA



ALL
Blaine

- LEGEND —
- PAVED ROADS
 - IMPROVED DIRT ROADS
 - OTHER ROADS
 - TRAILS
 - RAILROADS
 - ELE. RWYS.
 - SCHOOLS